

surfaceskins®
improves hand hygiene



Self-cleaning Alcohol Gel Door Pull Handle

Installation Video:

Please Scan the below QR code with your mobile phone to view the Pull Handle Installation Fitting & Gel Refill Bottle Changing Video.



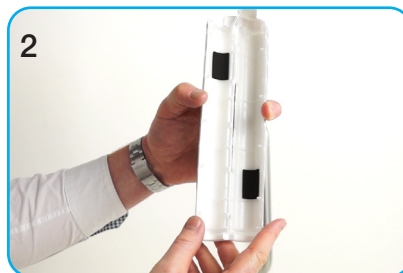
Pull Handle, Installation & Gel Refill Bottle Changing Guide

Alternatively please visit our Surfaceskins Vimeo channel at:
www.vimeo.com/user49357598

Pre-Installation



- 1
- Remove the Handle From the Box.
 - Open Handle Clamshell from Top LHS. (If snapped shut pop open with fingers).

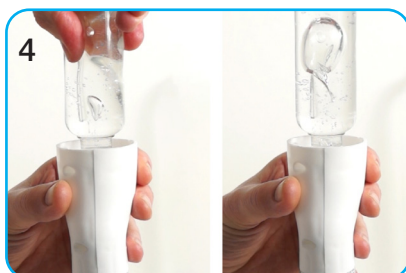


- 2
- Handle has 2 rubber grippers inside to give grip & help stop rotation.
 - **Optional:** For increased grip fit 2 extra Rubber Grippers opposite existing Grippers. For Smaller Dia Handles add additional Grippers on top of existing ones to double up

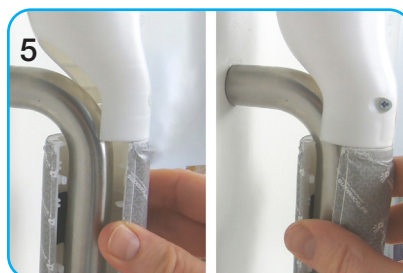


- 3
- Unscrew Gel Bottle Cap.
 - Do not remove reducer bung, this must stay in.
 - Screw in Gel Bottle.
 - Do NOT remove activation tape / sticker at this point.

Pre-loading Gel & Installation



- 4
- Pre-load / Prime handle with gel by squeezing bottle with thumb & forefinger 3 times. Wait for bubble between squeezes. (This aids gel activation, after which it will slowly drop into the handle under gravity).



- 5
- Fitting: Open Handle Clamshell.
 - Offer up from the RHS, sleeve over top & seat down into cutout / recess at back.
 - Snap shut & listen for clicks down full length of handle.



- 6
- Remove activation label. (This exposes a small hole & allows the gel to slowly drop into the handle over time).

Cover & Support Bracket Addition



- Add Top Cover / Cowling by aligning lugs.
- Slide over bottle, seat down & rotate clockwise to LHS to lock in position.



- Add retainer support bracket circa 10mm from top, by removal of adhesive sticker.
- Sleeve over & stick in place.



- The Pull Handle is now ready.
- When pressed a small amount of gel is released to self-clean in seconds ready for the next user.

Gel Bottle Replacement & Product Removal



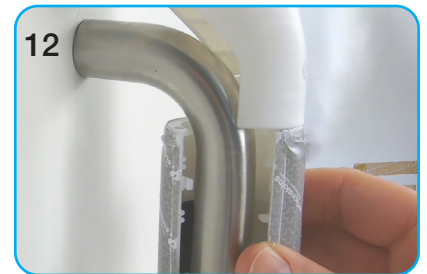
Gel Bottle Replacement:

- Rotate Top Cover / Cowling in anti-clockwise direction to front & remove.
- Unscrew NEW refill gel bottle (As per step 3).
- Screw in new bottle and squeeze once to ensure gel flow.
- (Optional: If handle is totally dry pre-load in gel as per step 4)



Removal of Handle:

- Place finger nails in the seam of the Clamshell at the Top LHS of the joint & prise open down the full length of the handle.



After prising open / apart simply remove.